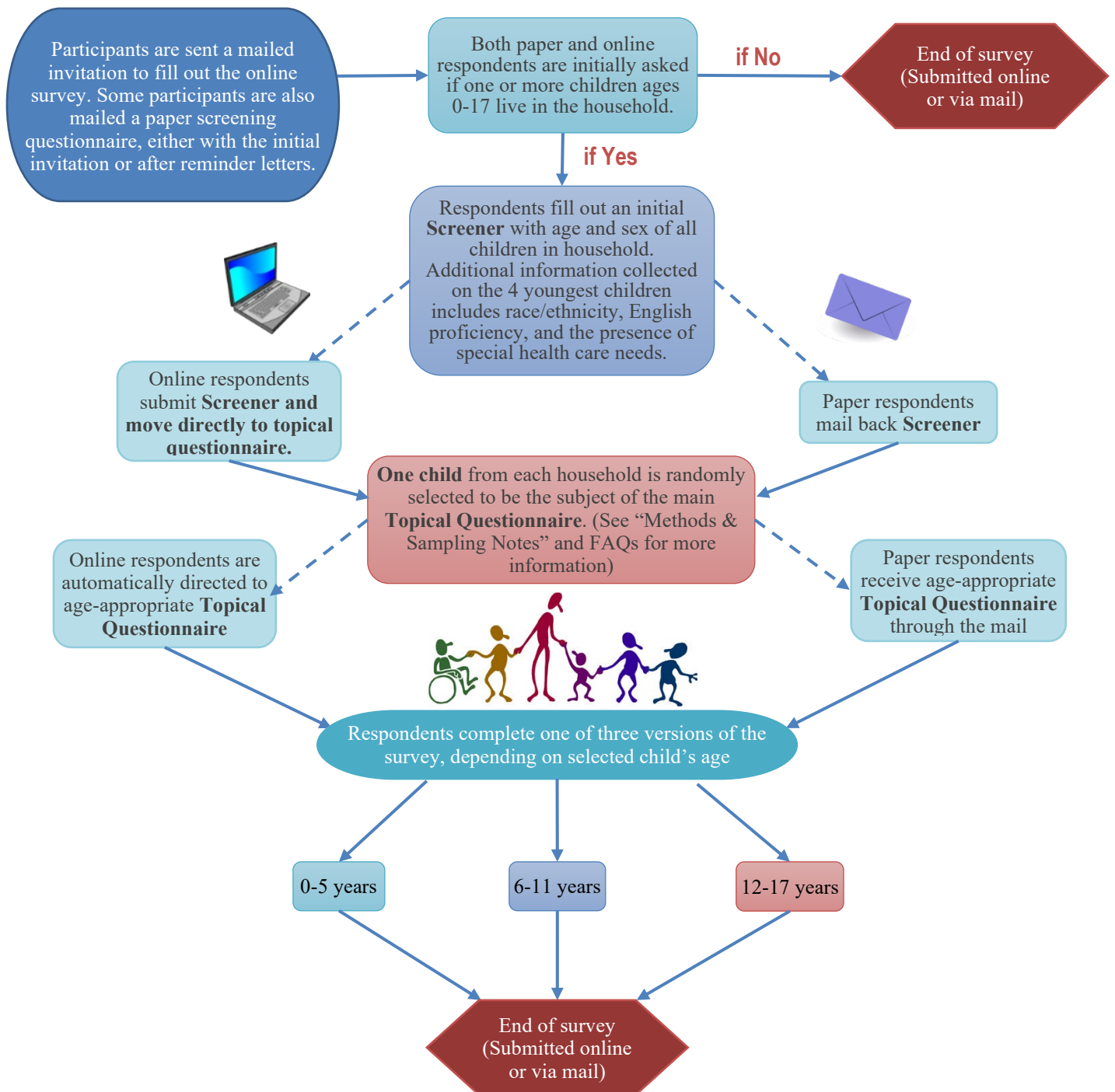


2017 National Survey of Children’s Health (NSCH)

Sampling and Survey Administration

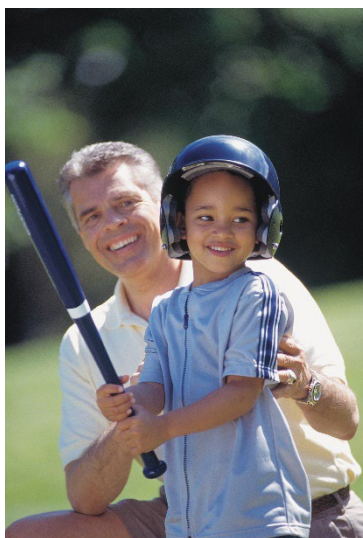
The 2017 *National Survey of Children’s Health* is administered online and by mail. Randomly selected addresses from non-institutionalized households across the United States are mailed instructions to access the survey online; some addresses also receive a paper version of the screening questionnaire. After two reminder letters and a postcard reminder to complete the survey by web, those households who have not accessed the online survey are mailed a paper screening questionnaire. Please see the “Methods & Sampling Notes” section below or the [Methodology Report and the Frequently Asked Questions \(FAQs\)](#) for more information on this process.

Survey Administration



Methods & Sampling Notes

- To increase sampling efficiency, administrative data were used to determine addresses that were more likely to be households with children aged 0-17 years.
- The survey over-sampled children 0-5 years and children with special health care needs (CHSCN). This means that in households with 2 or more children, CSHCN and children 0-5 years old had a higher probability of being selected as compared to other children in the household.
- Number of surveys completed in 2017:
 - 59,135 households screened for age-eligible children
 - 58,510 initial screeners completed
 - 21,599 child-level topical questionnaires completed (state ranges from 343 to 470)
 - 4,912 of topical questionnaires completed on CSHCN
- To view the questionnaires in English and Spanish, see: <https://mchb.hrsa.gov/data/national-surveys/questionnaires-datasets-supporting-documents>. In addition, respondents could access telephone-based assistance to complete the questionnaire in additional languages.
- For more detailed information on the NSCH, see: <http://childhealthdata.org/learn/NSCH>, <https://mchb.hrsa.gov/data/national-surveys> and <https://www.census.gov/programs-surveys/nsch.html>.



Required Citation: Child and Adolescent Health Measurement Initiative (2018). "2017 National Survey of Children's Health, Sampling and Survey Administration." Data Resource Center, supported by Cooperative Agreement 1-U59-MC06980-01 from the U.S. Department of Health and Human Services, Health Resources and Services Administration (HRSA), Maternal and Child Health Bureau (MCHB). Available at www.childhealthdata.org. Revised 05/07/18.

This project is supported by the Health Resources and Services Administration (HRSA) of the U.S. Department of Health and Human Services (HHS) under grant number U59MC27866, National Maternal and Child Health Data Resource Initiative, \$4.5M. This information or content and conclusions are those of the author and should not be construed as the official position or policy of, nor should any endorsements be inferred by HRSA, HHS, or the U.S. Government.