



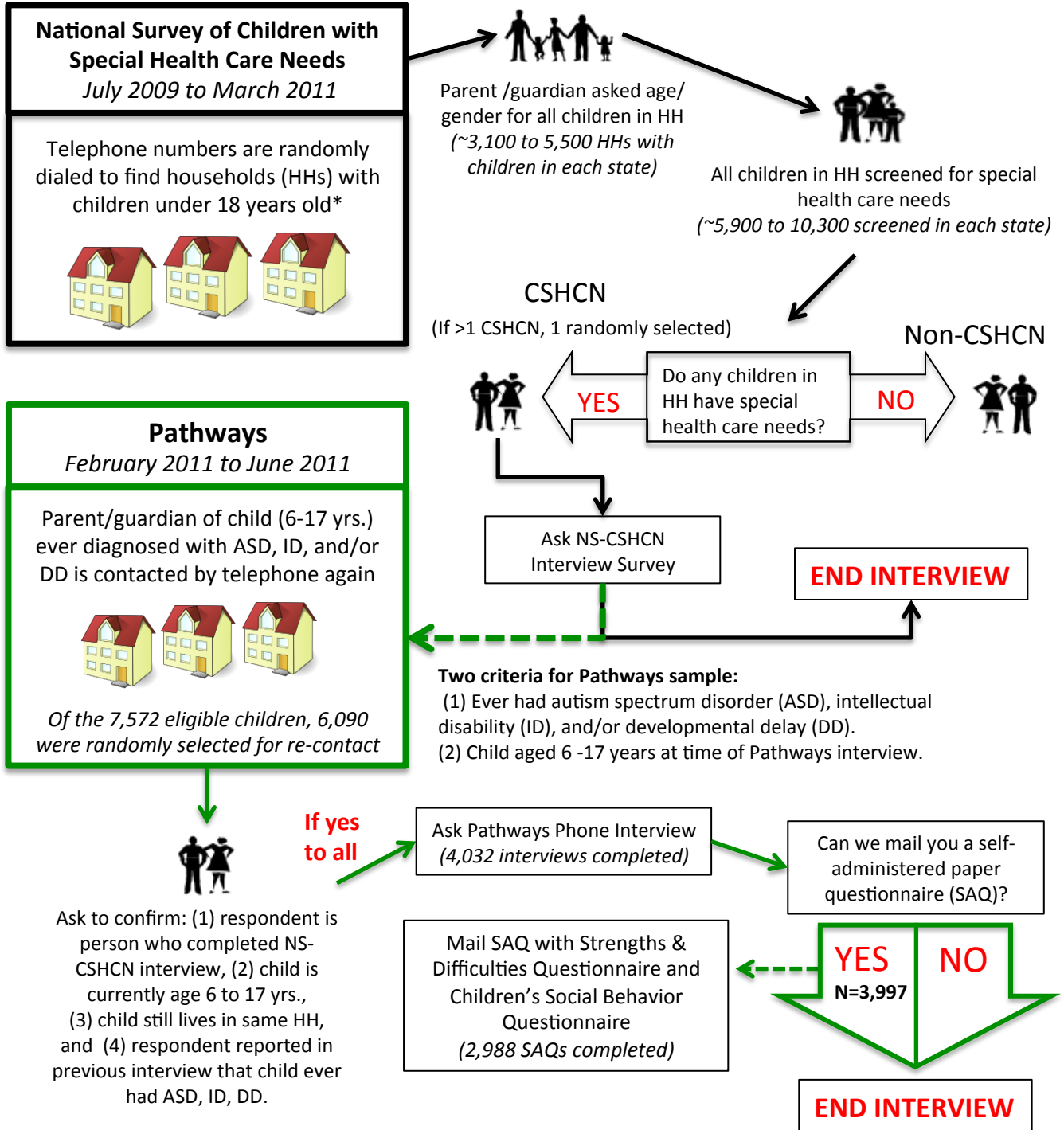
Your Data ... Your Story

Data Resource Center for Child & Adolescent Health

A project of the Child and Adolescent Health Measurement Initiative

2011 Survey of Pathways to Diagnosis and Services

Sampling and Survey Administration Process



*Some HHs were contacted on a cell phone. In this case, the parent or guardian was asked if they have a landline and, if so, how likely it would be answered if it rang. If the parent or guardian does not have a landline or is unlikely to answer it, then they were eligible to continue the survey. Otherwise, the interview ended.