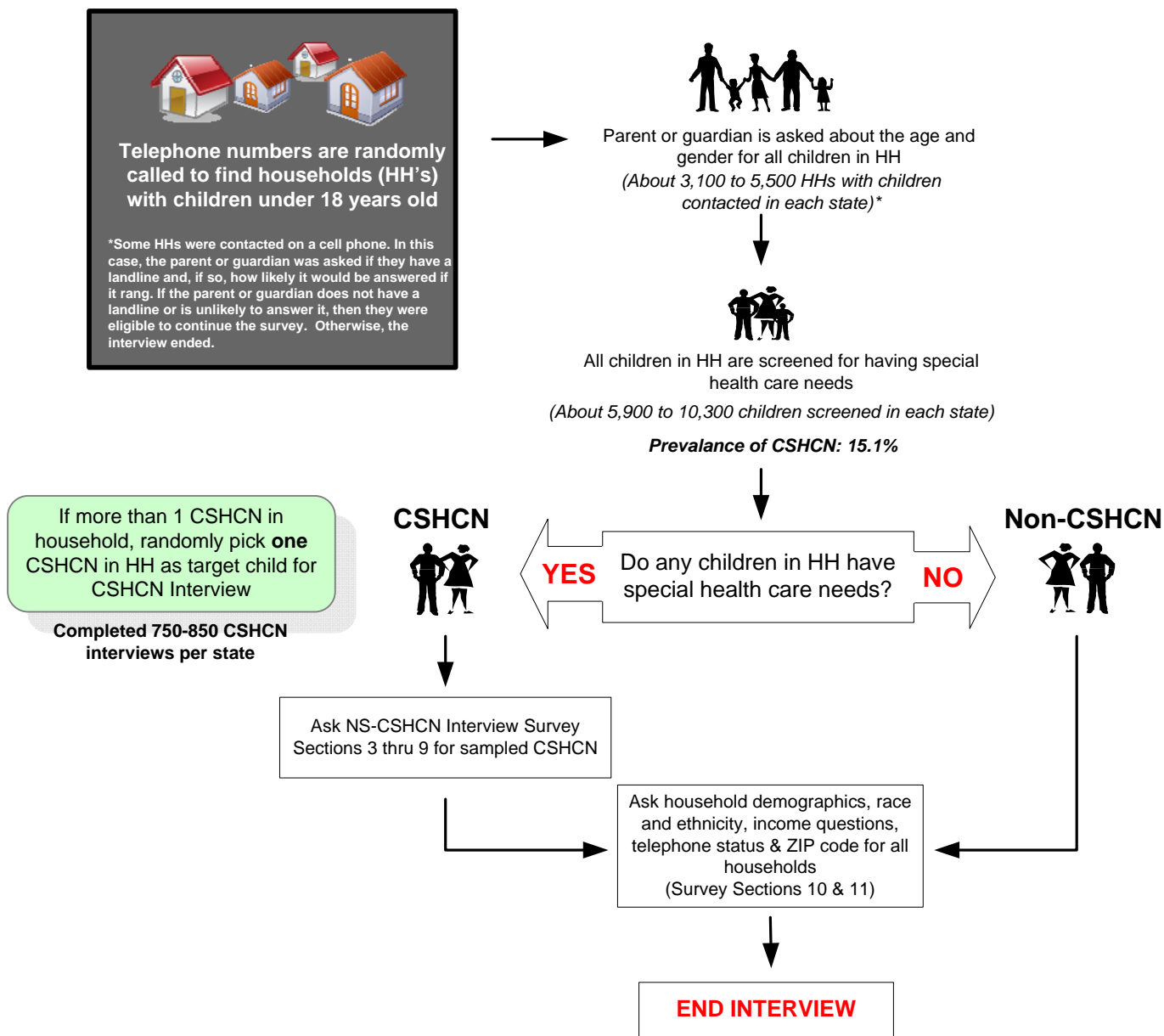


2009/10 National Survey of Children with Special Health Care Needs (2009/10 NS-CSHCN)

Sampling and Survey Administration Process



196,159 households with children sampled nationally (approx 3,850 per state)

372,698 children were screened for special health care needs (approx 7,250 per state)

Final Screener datasets have 371,617 children under 18 years old, in order to maintain confidentiality of respondents.

40,242 CSHCN interviews completed nationwide (at least 750 in each state)

***Nationally, about 20% of households have 1 or more CSHCN**